

KEDU[®]

SWITCHED ON

WORLD CLASS
ELECTRICAL SWITCH
PARTNER



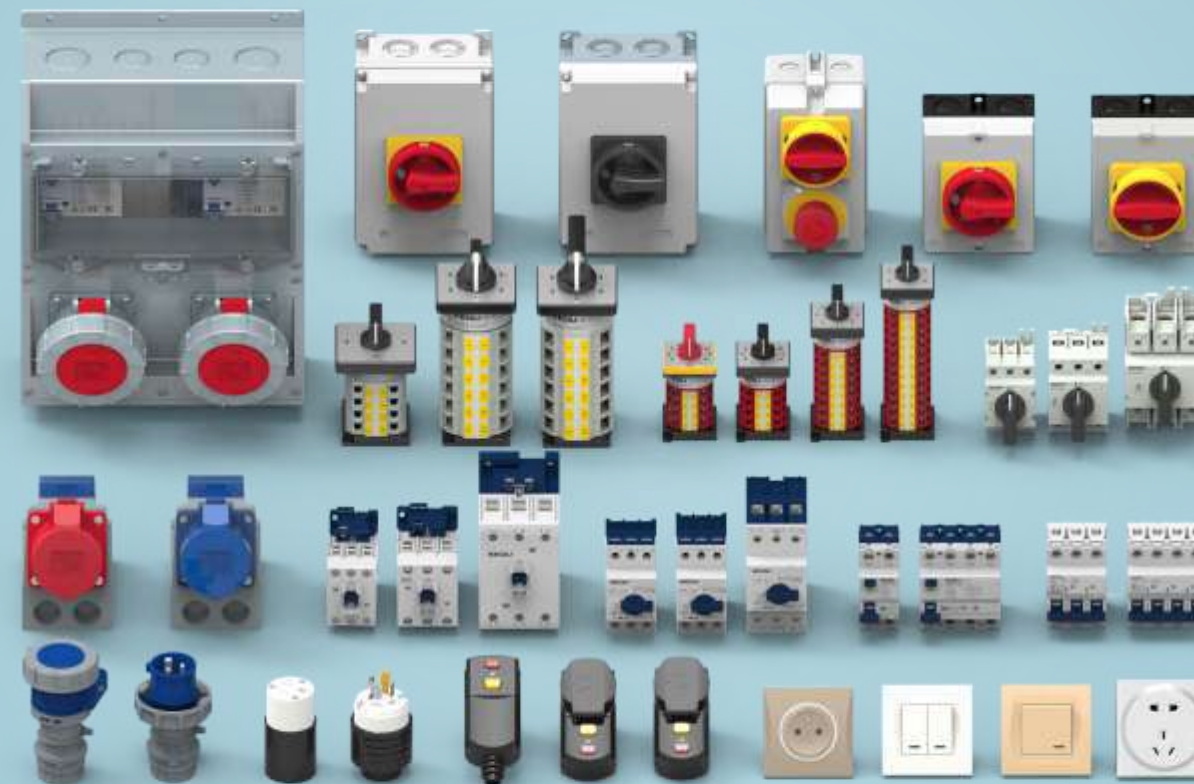
KEDU ELECTRIC CO.,LTD.

118 Songqiao Street,
Xiasha Economic and Technological Development Zone,
Jiangan District, Hangzhou, Zhejiang, P.R.China 310018
Tel: +86(0)571-56700777
Fax: +86(0)571-56700776

Puqi Industrial Zone
Hongqiao, Yueqing, Zhejiang, P.R.China 325608
Tel: +86 (0)577 62388666
Fax: +86 (0)577 62351114
Email: kedu@kedu.cn

KEDU[®]

SWITCHED ON



◀ **LOW-VOLTAGE PRODUCT** ▶

www.kedu.cn



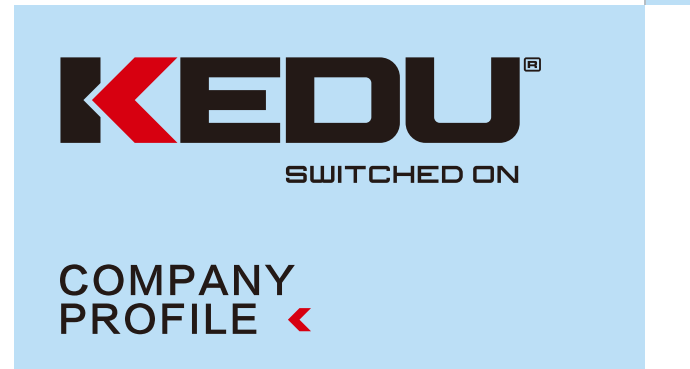
KEDU Electric Co., Ltd. is a specialized switch manufacturer in China, Our own designed and developed products supply over 200 middle and high end customers from America, the UK, France and Germany etc. Our factory was founded in 1988, located near the famous scenery of Yandang Mountain. We currently have over 60 specialized switch product lines, and operate according to ISO9001 and TS16949 quality management systems.

Our Company has an excellent technology research and development foundation with more than 160 senior technicians. We adopt advanced 3D software UG. to design, which can meet different customer requirements.

Equipped with advanced facilities, our laboratory is certified by UL, CTDP and TUV, which enhances our ability of new products development & continuous improvement as well as short certification leadtime.

KEDU produces 28 major series such as household switches, motor protection, leakage protection plug/socket, miniature circuit breakers, disconnectors, change-over switches, molded case circuit breakers, AC contactors and industrial plugs & sockets etc.

Our ERP system has expanded to more than 16,000 items and 500 of them are specially designed to mate with products of many worldwide famous companies. All of our products have acquired United States UL, cUL, Canada



CSA, German VDE, TUV, CE, ENEC and Sweden SEMKO certification, and 260 national patents, 26 international patents, more than 30 products to fill gaps in the world. Our MCB, RCCB, Contactor, Cam Switches, MCCB, HY38M series and sensors etc have achieved a world leader level.

KEDU brand products with excellent quality, reasonable price and good service have gained great reputation. Our products sell well to high-end European and American customers. Our switches supporting the use of electric power tools, supporting many domestic large and medium-sized export enterprises.

We take pride of our ability to work closely with both new and existing customers in order to fulfill the changing needs of their business. As always, it is our goal to consistently provide products of high quality.



ADVANCED FACILITIES

We are a specialized electrical manufacturer dedicating on new product development, project development, product testing, tooling design, manufacturing, jig design, manufacturing programming and injection molding, punching, welding, wiring, assembly etc. we are operating in accordance with ISO9001 and TS16949 quality management system.



LABORATORY

Our laboratory was designed according to the UL, VDE, EN and IEC international standards and meet the test requirements of all products...

KEDU Electrical standard laboratory is in strict accordance with UL, VDE, EN and IEC test.



Quality pursuit, Ceaseless transcendence

M2 Miniature circuit breakers (for civil use)



- ▶ Standard: IEC/EN60898-1 GB10963.1
- Rated current: 1-63A
- Rated voltage: 230/400V
- Number of poles: 1P,2P,3P,4P
- Instantaneous tripping type: B,C,D
- Rated short-circuit breaking capacity: 6000/10000A
- Electrical life: 6000 times
- Mechanical life: 20000 times
- Shape of front face: Flat panel, Rocker panel
- Overload & short circuit protection, Isolation function
- Can mate with types of module accessories

CKDB7 Miniature circuit breakers (for civil use)



- ▶ Standard: IEC/EN60898-1 GB10963.1
- Rated current: 1-63A
- Rated voltage: 230/400V
- Number of poles: 1P,2P,3P,4P
- Instantaneous tripping type: B,C,D
- Rated short-circuit breaking capacity: 4500A, 6000A
- Electrical life: 6000 times
- Mechanical life: 20000 times
- Shape of front face: Rocker panel
- Overload & short circuit protection, Isolation function
- Can mate with types of module accessories

CKDB2 Miniature circuit breakers (for industrial use)



- ▶ Standard: IEC/EN60947-2 GB14048.2
- Rated current: 1-63A
- Rated voltage: 230/400V
- Number of poles: 1P,2P,3P,4P
- Instantaneous tripping type: K(Ii=1.3In)
- Rated short-circuit breaking capacity: 10000A
- Electrical life: 6000 times
- Mechanical life: 20000 times
- Shape of front face: Flat panel, Rocker panel
- Overload & short circuit protection, Isolation function
- Can mate with types of module accessories

CKDB3 DC Miniature circuit breakers(for civil use)



- Standard: IEC/EN60898-1 GB10963.1
- Rated current: 1-63A
- Rated voltage: 220V(1P), 440V(2P), 660V(3P), 880V(4P)
- Number of poles: 1P, 2P, 3P, 4P
- Instantaneous tripping type: B, C
- Rated short-circuit breaking capacity: 6000A, 10000A
- Electrical life: 6000 times
- Mechanical life: 20000 times
- Shape of front face: Flat panel
- Overload & short circuit protection, Isolation function
- Can mate with types of module accessories

CKDB3 Photovoltaic DC Miniature circuit breakers(for industrial use)



- Standard: IEC/EN60947-2 GB14048.2
- Rated current: 10-63A
- Rated voltage: 250V(1P), 500V(2P), 750V(3P), 1000V(4P)
- Number of poles: 1P, 2P, 3P, 4P
- Instantaneous tripping type: R(T-14In), K(14-20In)
- Rated short-circuit breaking capacity: 10000A
- Electrical life: 6000 times
- Mechanical life: 20000 times
- Shape of front face: Flat panel
- Overload & short circuit protection, Isolation function
- Can mate with types of module accessories

CKDG2 Switch-disconnector



- Standard: IEC/EN60947-2 GB14048.2
- Rated current: 16/32/40/63/80/100/125A
- Rated voltage: 230V(1P), 400V(2P/3P/4P)
- Number of poles: 1P, 2P, 3P, 4P
- Rated short-circuit breaking capacity: 10000A
- Electrical life: 6000 times
- Mechanical life: 20000 times
- Shape of front face: Rocker panel
- CKDG2 series Switch-disconnector is applied to power distribution and control circuits with contacts ON/OFF indicator and high safety, used as the master switch of terminal apparatus, or used to disconnect and control all kinds of electric motors, appliances and lighting etc.

CKDL1/2 Residual current circuit breakers



- Standard: IEC/EN61008-1 GB16916.1
- Rated current: 25, 32, 40, 63, 80, 100A
- Rated voltage: 230V(1P+NP), 400V(3P+NP)
- Number of poles: 1P+N, 3P+N
- Type: A, AC
- Rated short-circuit limit: 6000A, 10000A
- Rated residual current: 10, 30, 100, 300mA
- Electrical life: 4000 times
- Mechanical life: 4000 times
- Shape of front face: Flat panel, Rocker panel

CKDL5 Add-on block for residual current protection



- Standard: IEC/EN61009-1 GB16917
- Rated current: 25, 40, 63A
- Rated voltage: 230V(1P+N), 400V(2P, 3P, 4P)
- Number of poles: 1P+N, 2P, 3P, 4P
- Type: A, AC
- Rated short-circuit breaking capacity: 6000A, 10000A
- Rated residual current: 30, 100, 300mA
- Shape of front face: Rocker panel
- Overload & short circuit protection, Isolation function
- Indication of contact status
- Also used as infrequent switching for circuits

CKDM1 Molded case circuit breakers



- Standard: IEC/EN60947-1 and GB14048.1
IEC/EN60947-2 and GB14048.2
IEC/EN60947-3 and GB14048.3
- Rated current: 63-250A
- Rated voltage: 690V
- Number of poles: 1P, 2P, 3P, 4P
- The circuit breaker has the function of overload, short-circuit, under-voltage protection, and isolation function, which can protect circuit and power equipment from being damaged.
- The circuit breaker is characterized with small size, high breaking capacity and short flying arc (zero flying arc some times), vibration resistance, etc.
- The over-current tripping adopts adjustable thermal magnetic type.
- The internal accessories have four types: shunt tripper, under-voltage tripper, auxiliary contacts, and alarm contact.

Modular motor control system

Used for motor start up, providing short circuit protection and overload protection, With excellent breaking capacity, the system will disconnect effectively & quickly in case of short circuit, preventing equipment being damaged



CKDD1 Series MPCB/MCP Motor protection circuit breakers MPCB Motor circuit protectors MCP

- Standard: IEC/EN60947-2 IEC/EN60947-4-1 GB14048.2 GB14048.4
- Adjusting range of Rated current: 0.1-45A
- Rated voltage: 230/240V~, 400/415V~, 440V~, 500V~, 690V~
- Utilization category: AC-3
- Innovative multi-functional motor protector. Consists of devices for restart protection, overload, protection, arc extinguish tripping, etc



CKDK series Modular motor control system

- Standard: IEC/EN60947-2 IEC/EN60947-4-1 GB14048.2 GB14048.4
- Used for motor start up, providing short circuit protection and overload protection; With excellent breaking capacity, the system will disconnect effectively & quickly in case of short circuit, preventing equipment being damaged; Sensitive to phase loss; Only one 35 mm standard DIN-rail required for the starter below 23A; -20°C to +60°C motor temperature compensation; Manual reset after thermal overload.



CKDC1 Series AC/DC Mini Contactors



- Standard: IEC/EN60947-4-1 IEC/EN60947-5-1 GB14048.4 GB14048.5
- Rated operating current: 5-12A
- Mechanical life: 12 millions times
- Electrical life: 3 millions times
- Utilization category: AC-1; AC-2; AC-3; AC-4; AC-8a; AC-8b
- AC/DC Coil control; same size; compact space; with smaller size required by IEC product; IP2X touch proof protection; Integrated surge suppressor. Reliable operation. less consumption and small noise of electromagnetic loop.

CKDC2 Series AC/DC Contactors



- Standard: IEC/EN60947-4-1 IEC/EN60947-5-1 GB14048.4 GB14048.5
- Rated operating current: 6-95A
- Mechanical life: 12 millions times
- Electrical life: 3 millions times
- Utilization category: AC-1; AC-2; AC-3; AC-4; AC-8a; AC-8b
- Combination sizes... 50 kW / 5... 60 Hp (9... 95A)
- Front and side-installed auxiliary contacts
- Coil installed control modules with compact structure
- Reversible coil terminations (power line or load side)
- All equipments can be mounted on 35 mm DIN-Rail

CKDR Series Bimetallic Overload Relays

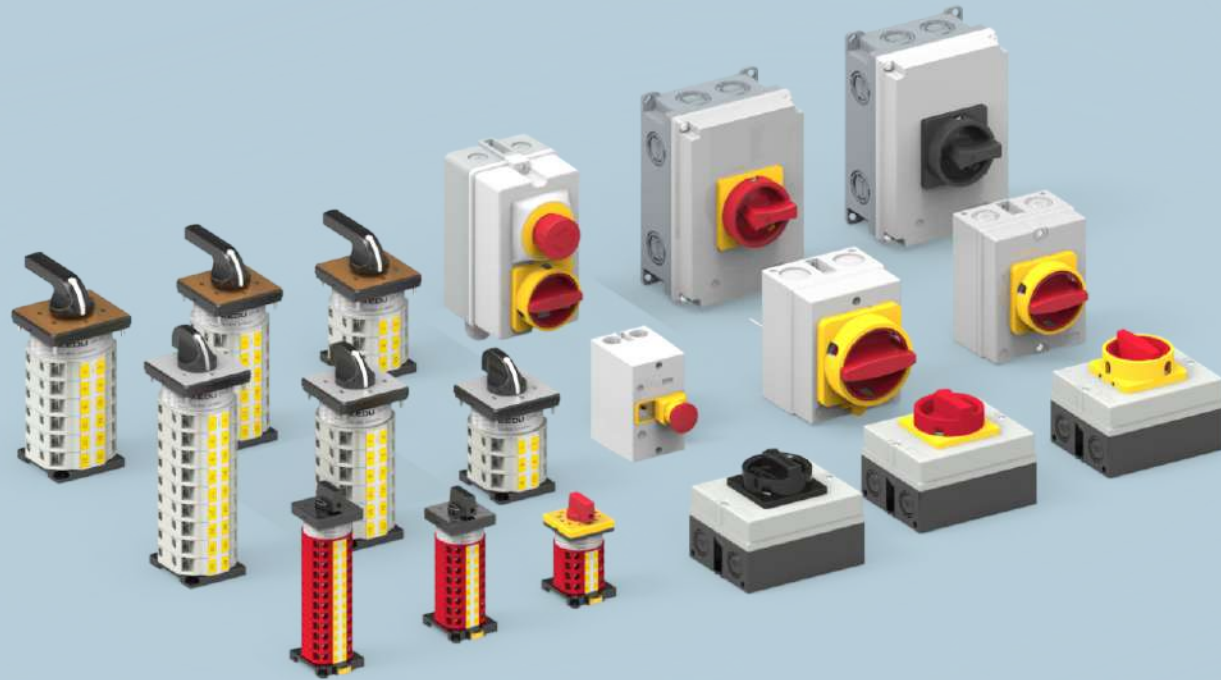


- Standard: IEC/EN60947-1,-4-1,-5-1 UI508, GB14048.4, GB14048.5
- Adjusting range of Rated current: 0.1-47A
- Rated Voltage: 0-690VAC, 440VDC
- Overload and phase loss protection
- Overload protection tripping class 10/10A
- Auxiliary switch (1N.O. and 1N.C.)
- Phase loss sensitivity
- Manual/automatic reset mode selection

Switch-disconnector Cam switch

Durable and reliable, first-class quality, high safety

IP67 or IP54



ZH-20/40/63/80 Switch-disconnector / Cam switch



- ▶ Standard: IEC/EN60947-5-1 GB14048.5
- Rated current: 16A, 20A, 25A, 32A, 40A, 63A, 80A
- Rated voltage: 690V~
- Utilization category: AC-3, AC-23A/B, AC-21A/B, AC-15
- Switching angle: 30°, 45°, 60°, 90°
- Floor: 1-12
- Position: 2-12
- The main innovation of ZH series multi-function cam switch adopting module structure design, can be widely applied in different fields, like main circuit and auxiliary circuit. A different combination of module is available for customers.

ZH-N Switch-disconnector

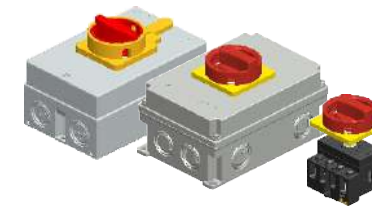


IP54

IP67

- ▶ Standard: IEC/EN60947-3 GB14048.3
- Rated current: 16A, 20A, 25A, 32A, 40A
- Rated voltage: 230V~; 400V~; 500V~
- Number of poles: 2P, 3P, 4P
- Utilization category: AC-23A; AC-22A/AC-21A; DC-23A
- Degree of protection: IP54/ IP67 (with box)
- Number of operating cycles: 5E4
- Installation: Panel assembly, Rail assembly, with box assembly
- Can be assembled with additional contact
- When assembled with water-proof box, the switch has double protection capability

ZH-M Switch-disconnector

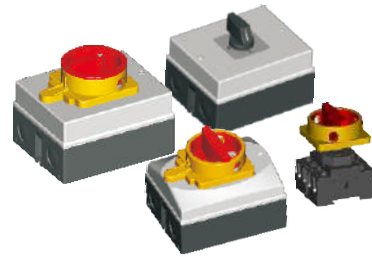


IP54

IP67

- ▶ Standard: IEC/EN60947-3 GB14048.3
- Rated current: 63A
- Rated voltage: 300V~; 440V~; 500VDC
- Number of poles: 3P, 4P
- Utilization category: AC-23A; AC-22A/AC-21A; DC-23A
- Degree of operating cycles: IP67 / IP54 (with box)
- Number of protection: 5E4
- Installation: Panel assembly, Rail assembly, with box assembly
- Can be assembled with additional contact
- When assembled with water-proof box, the switch has double protection capability

ZH-C Switch-disconnector



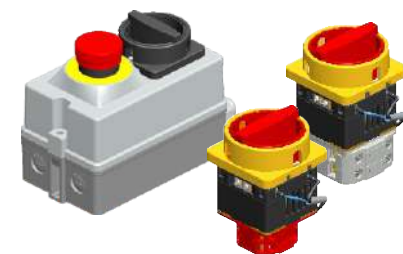
- Standard: IEC/EN60947-3 GB14048.3
- Rated current: 16A; 20A; 25A; 32A; 40A;
- Rated voltage: 440V~
- Number of poles: 3P, 4P
- Utilization category: AC-3, AC-23A, AC-22A, AC-21A
- Degree of protection: IP54(with box)
- Number of operating cycles: 5E4
- Installation: Panel assembly, Rail assembly, with box assembly
- When assembled with water-proof box, the switch has double protection capability

ZH1,ZH2,ZH3 Cam switch



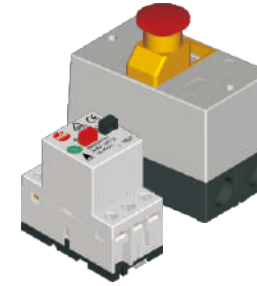
- Standard: IEC/EN60309-1 1999+A1+A2
IEC/EN60309-2 1999+A1+A2
IEC/EN60309-4 2007+A1
- Rated current: 16A; 32A; 63A
- Rated operating voltage: 110V~, 230V~, 400V~, 460V~, 500V~, 50-500V~, 380V~, 440V~
- Utilization category: AC-3, AC-23A, AC-21A, AC-15
- Widely used in iron and steel smelting, petrochemical, electric power, electronics, railways, construction sites, airports, mines, mining, the industrial distribution field drainage treatment plant, shopping malls, hotels and other types of enterprises.
- With mechanical interlock, switch can only be started when the plug is fully inserted. And plug can only be pulled out when the switch is turned off.
- Degree of protection: IP44/IP67

ZH-42/43 Series combined cam switch



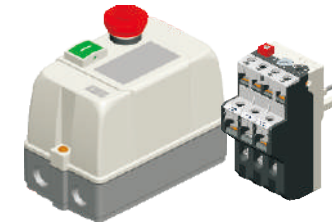
- Standard: IEC/EN60947-4-1
- Rated current: 1-20A
- Rated voltage: 230/400V~
- Utilization category: AC-3
- Degree of protection: IP54
- Combine Cam Switch with overload & power off protection can switch and control single or 3 phase motor, especially to control electric saw and grinder machine. It can make machines break in 4-12S. It can control return circuit with a brake.

RB6 Series motor protector



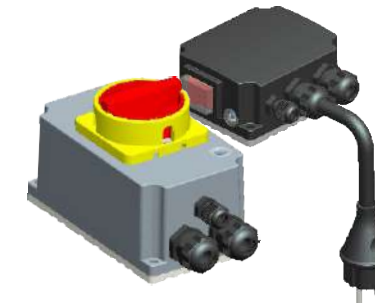
- Standard: IEC/EN60947-4-1 UL508
- Rated current: 0.1-25A(Depends on the uses' demand)
- Rated voltage: 690V~
- Utilization category: AC-3
- Degree of protection: IP55(with box)
- The motor protection switch is applied to protect the electric system from overload. If over current occurs, the switch component will react to cut the system off. The high capacity switch can provide optimum protection for your electric system. The motor protection switch can be reset at any time by pushing the button.

Rb7 Series electromagnetic motor starter



- Standard: IEC/EN60947-4-1
- Rated current: 1.6- 25A
- Rated voltage: 230/400V~
- Utilization category: AC-3
- Degree of protection: IP54(with box)
- RB7 series electromagnetic motor starter with overload & power-off protection can switch and control single or 3 phase motor, especially to control electric saw and grinder machine, It can make machines breaking in 4-12S. It can control return circuit with a brake.

RB9/10 Motor overload protection controller



RB9

RB10

- Standard: IEC/EN60947-4-2 GB14048.6
- Rated current/voltage:
RB9: 3P 1.1A, 1.9A, 2.3A, 2.75A, 3.75A, 5A, 5.5A, 6.5A(400V 50/60Hz)adjustable
RB10: 1P 1.3A, 2.4A, 3.3A, 3.7A, 5A, 5.5A, 6A, 6.5A(230V 50/60Hz)adjustable
- Utilization category: AC-53A
- Degree of protection: IP54
- The controller operates when default phase causes block, with main circuit be cut off and the relay works. Current test won't be influenced by harmonic. High precision of tripping and reset manually when operated. A thermal element can be assembled with the motor protection controller to monitor the motor temperature. NC switch can be used for motor remote control. Tripping curve Class 10A. For default phase problem function time <3s or defined by customers.



Module Combination

IP67

NEW

World Premiere

KEDU is the first company in the globe realizing the modular combination box with IP67 degree. This innovative design is characterized by its reliable quality and easy usage, which has obtained the international patent and also been approved by TÜV.



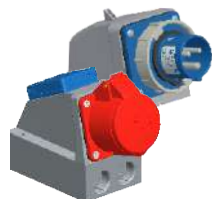
Industrial Plug/connector



Module
Combination

Industrial
Plug
connector

Wall mounted plug and socket



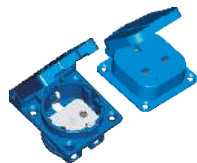
- ▶ Rated Voltage: 415VAC or lower
- Rated Current: 16A/32A
- Protection degree: IP44/IP67
- Function: Reliability with high-impact; heat-proof; water proof
- Suitable for dust and humidity environment
- Certification: SEMKO/CE

Industrial adaptor



- ▶ Rated current/voltage: Depending on different country standard
- Protection degree: IP44
- Function: Realize transferring of power supply
- Multi-way socket combination
- Certification: SEMKO/CE/NF

Water-proof socket



- ▶ Rated voltage/current: Depending on different country standard
- Protection degree: IP44/IP54
- Function: British/French/Danish/Swiss/Australian/Italy/American/German
- Screw version & screwless version to chosen
- Certification: BG/NF/D/S+/Queensland/UL/SEMKO/VDE

US Receptacle



- ▶ Rated voltage: 120AC/125VAC/208VAC/250VAC/227VAC/480VAC
- Rated current: 20A/30A
- Function: 2-pole 3-wire grounding; 3-pole 3-wire; 3-pole 4-wire grounding; 4-pole 5-wire grounding
- Certification: UL

ARCD & PRCD



- ▶ Rated voltage/current: Depending on different country standard
- Protection degree: IP20/IP54
- Function: With current leakage protection
- German/British/Swiss/French/Australian/US version
- Leakage current of 10mA and 30mA
- Certification: GS/BG/S+/Queensland/CE

Industrial plug/connector



- ▶ Rated voltage: 110VAC/230VAC/400VAC/460VAC/500VAC/600VAC/>50-500VAC
- Rated current: 16A; 32A; 63A
- Protection degree: IP44/IP67
- Function: Full line from 16A to 125A
- Special function with phase testing
- Special function with quick connection
- Certification: SEMKO/CE/VDE(for 16A&32A)

Plug & Socket



- ▶ Rated voltage: 250V for German; French; Swiss version;
- Rated current: 16A for German; French; 10A for Swiss; 16A for Swiss
- Protection degree: IP44/IP20
- Function: With special rubber with elasticity, high impact resistance
- Certification: VDE/NF/S+

US Plug/Cord connector



- ▶ Rated voltage: 125VAC
- Rated current: 15A
- Protection degree: IP20
- Poles: 2P+E
- Cable range: 18-10AWG
- Certification: UL



BX1 Portable distribution box

- ▶ Rated voltage: Plug and outlet 3P+N+E 230/400VAC Outlet 2P+E 250VAC; Plug and outlet 3P+N+E 200/346VAC; 240/415VAC; Outlet 2P+E 250VAC
- Rated current: 16A; 32A
- Protection degree: IP44
- Function: Equipped with MCB; RCCB for short-circuit and leakage protection
- Different combination requested by customer
- Certification: SEMKO/CE

BX2 Portable distribution box



- ▶ Rated voltage: 230VAC
- Rated current: 16A
- Protection degree: IP65
- Function: Suitable for building working repairing removing, excavating or similar
- Equipped with MCB; RCCB for short-circuit and leakage protection
- Different combination requested by customer
- Emergency stop button and metal holder is optional
- Certification: TUV/CE

Compact distribution box



- ▶ Rated voltage: 230/400VAC
- Rated current: 16A
- Max output power: 11KW/400VAC Breaking capacitor: AC-1 230V/400V/16A; AC-3 230V/13.5A/3KW
- 400V/9A/4KW
- Protection degree: IP44
- Function: Applicable for vacuum device
- With turning on/off time delay of 3-5s(optional)
- Different starting time can avoid impact of inrush current
- Certification: SEMKO/CE



- MCB M2 C type
- Icn=6000A, 10000A
- 1P, 2P, 3P, 4P
- 16A, 32A
- RCCB CKDL A type, AC type
- Icn=6000A, 10000A
- 1P+N, 3P+N
- 25A, 32A, 40A, 63A

BX3 Portable distribution box



- ▶ Rated voltage: 230/400VAC
- Rated current: 16A; 32A
- Protection degree: IP44
- Function: Equipped with MCB; RCCB for short-circuit and leakage protection
- Different combination requested by customer
- Certification: SEMKO/CE

PS3 Combined socket



- ▶ Rated voltage: 220-240VAC
- Rated current: 16A; 32A
- Protection degree: IP44/IP67
- Function: Equipped with MCB; RCCB; RCBO for short-circuit and leakage protection
- Certification: TUV/CE

Wall switch

The combination of novel design thinking and modern aesthetic art can bring more humanity design, creating a natural comfortable living environment.



R18 Line



R58 Line



R28 Line



R68 Line



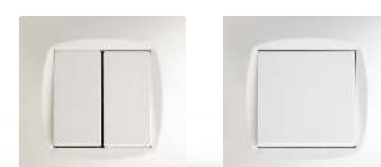
R78 Line



R88 Line



R98 Line



Wall switch

Wall switch